

## 44 Church Lane, Rode

£350,000

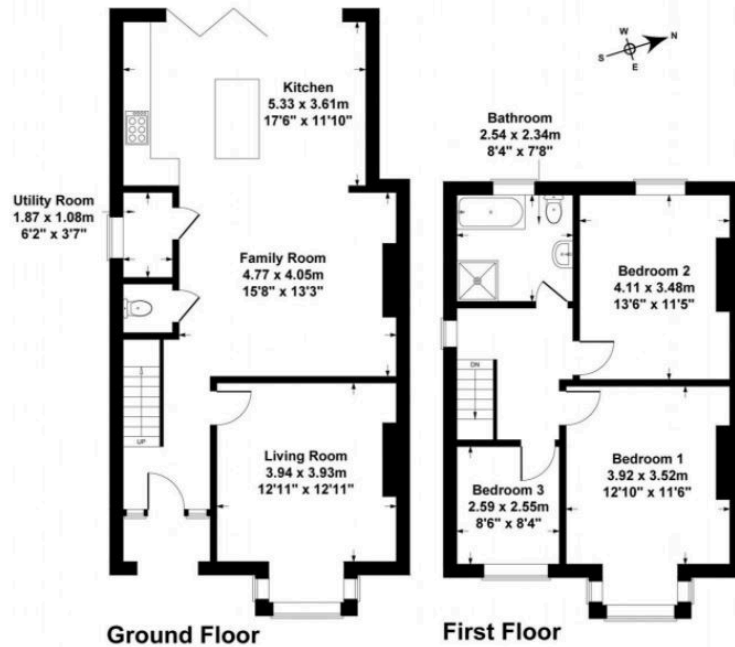
4 2 0



- 
- 
- 
- 
- 
- 
- 
-



Approximate Gross Internal Area  
Main House - 120 sq. metres (1297 sq. feet)



SKETCH PLAN FOR ILLUSTRATIVE PURPOSES ONLY  
All measurements walls, doors, windows, fittings and appliances, their sizes and locations, are shown conventionally and are approximate only. They cannot be regarded as being a representation by the seller, his agent, the illustrator or Connor and Company